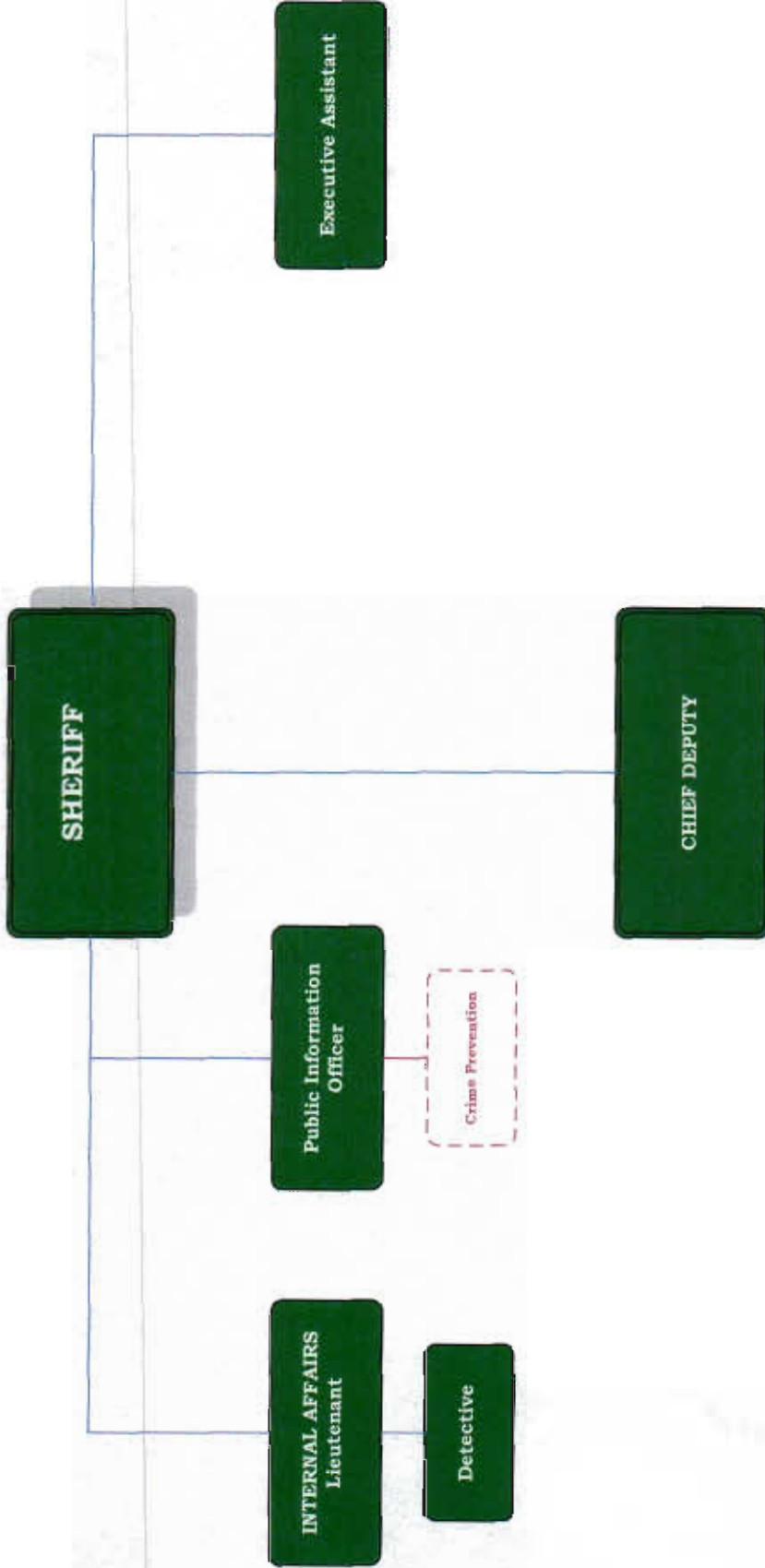




Highlands County Sheriff's Office Organizational Chart FY 2013 - 2014

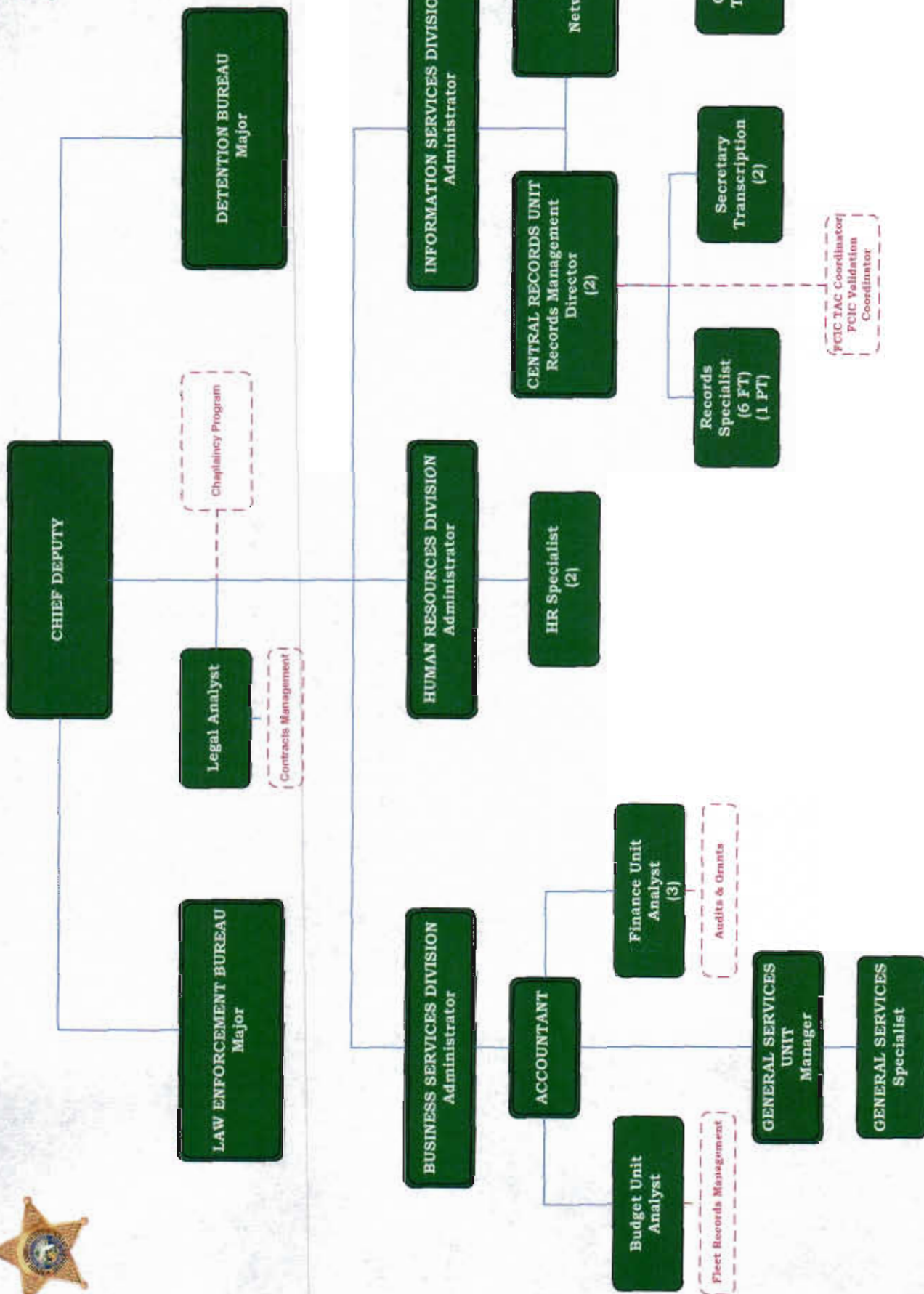


TOTAL FULL-TIME POSITIONS IN AGENCY:	344
TOTAL PART-TIME POSITIONS IN AGENCY:	12
TOTAL AGENCY POSITIONS:	356
FULL-TIME POSITIONS ON PAGE:	5
PART-TIME POSITIONS ON PAGE:	0

(Represents additional functions under position)

Effective 02/03/14

Susan Benton
 Sheriff Susan Benton
2/3/2014
 Date



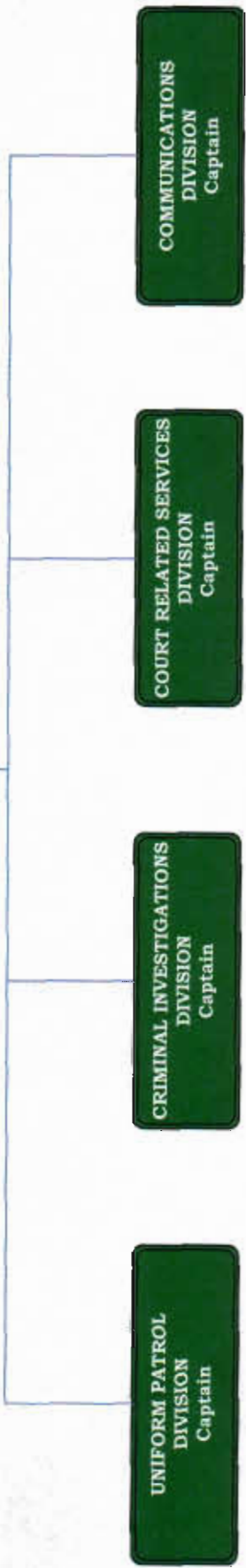
Represents additional functions under position

FULL-TIME POSITIONS: 28
PART-TIME POSITIONS: 1



LAW ENFORCEMENT BUREAU
Major

Administrative Aide



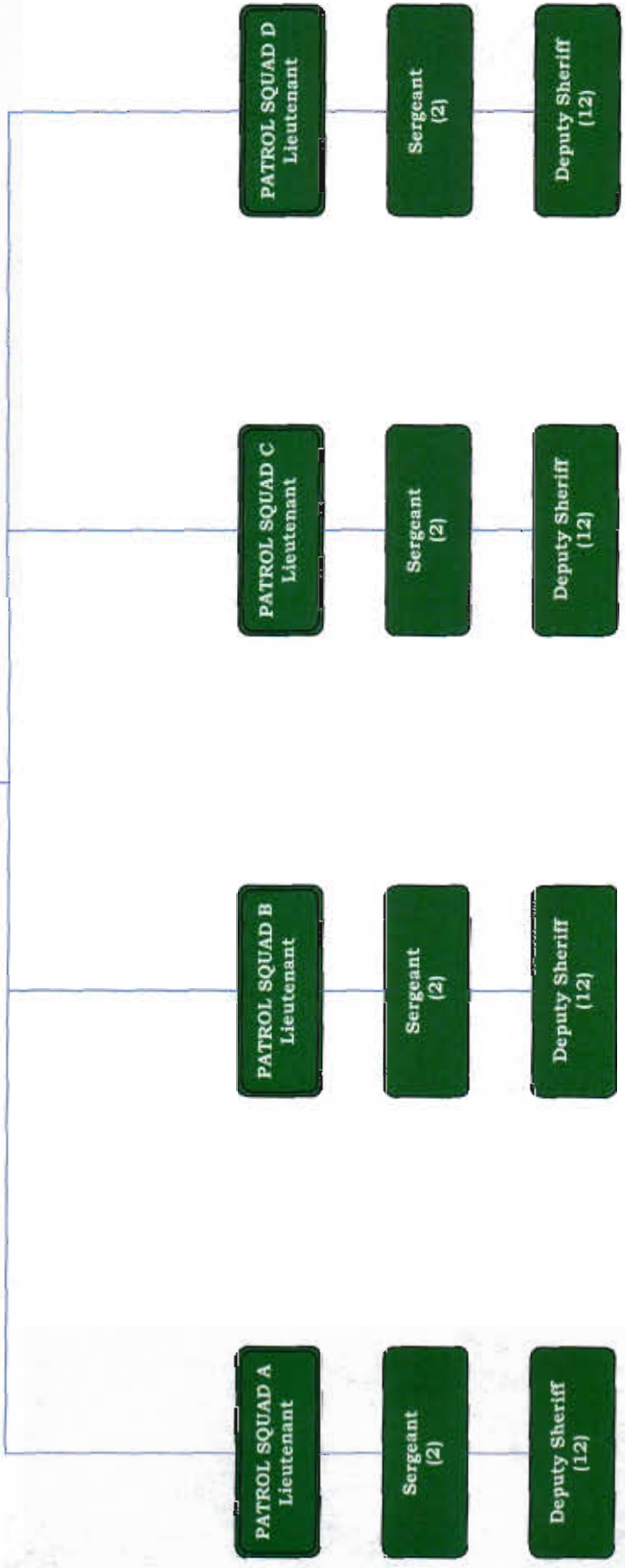
FULL-TIME POSITIONS: 2
PART-TIME POSITIONS: 0



UNIFORM PATROL DIVISION
Captain

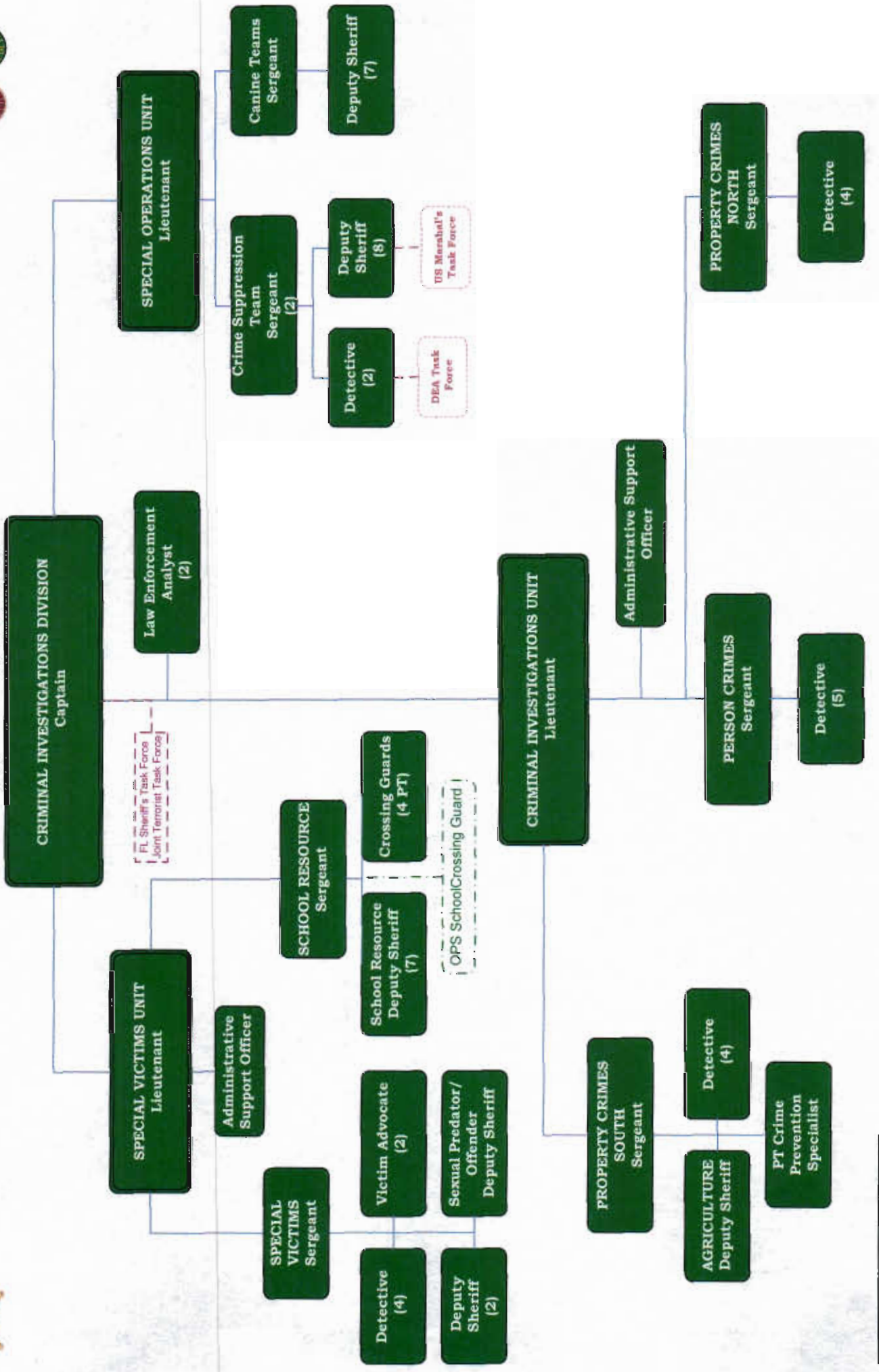
Dive Team

Special Weapons & Tactics Team



Represents additional functions under position

FULL-TIME POSITIONS: 61
PART-TIME POSITIONS: 0



FULL-TIME POSITIONS: 63
PART-TIME POSITIONS: 5

Represents additional functions under position

OPS NOT INCLUDED IN FTES





COURT RELATED SERVICES DIVISION
Captain

PT DIS PROGRAM
OPS Sworn

ACCREDITATION UNIT
Accreditation Manager

TRAINING UNIT
Training Coordinator

Accreditation/
Training Specialist

COURT SECURITY UNIT
Lieutenant

Sergeant

Deputy Sheriff
(8)

Court Support
Officer

**CRIME SCENE/
EVIDENCE UNIT**
Lieutenant

CRIME SCENE UNIT
Sergeant

**CRIME SCENE
Detective**
(3)

Crime Scene
Technician

Forensic
Technician

**PROPERTY &
EVIDENCE UNIT**
Evidence Manager

**EVIDENCE
Technician**
(2)

JUDICIAL PROCESS UNIT
Lieutenant

**JUDICIAL PROCESS
Deputy Sheriff**
(4)

Judicial Process
Specialist

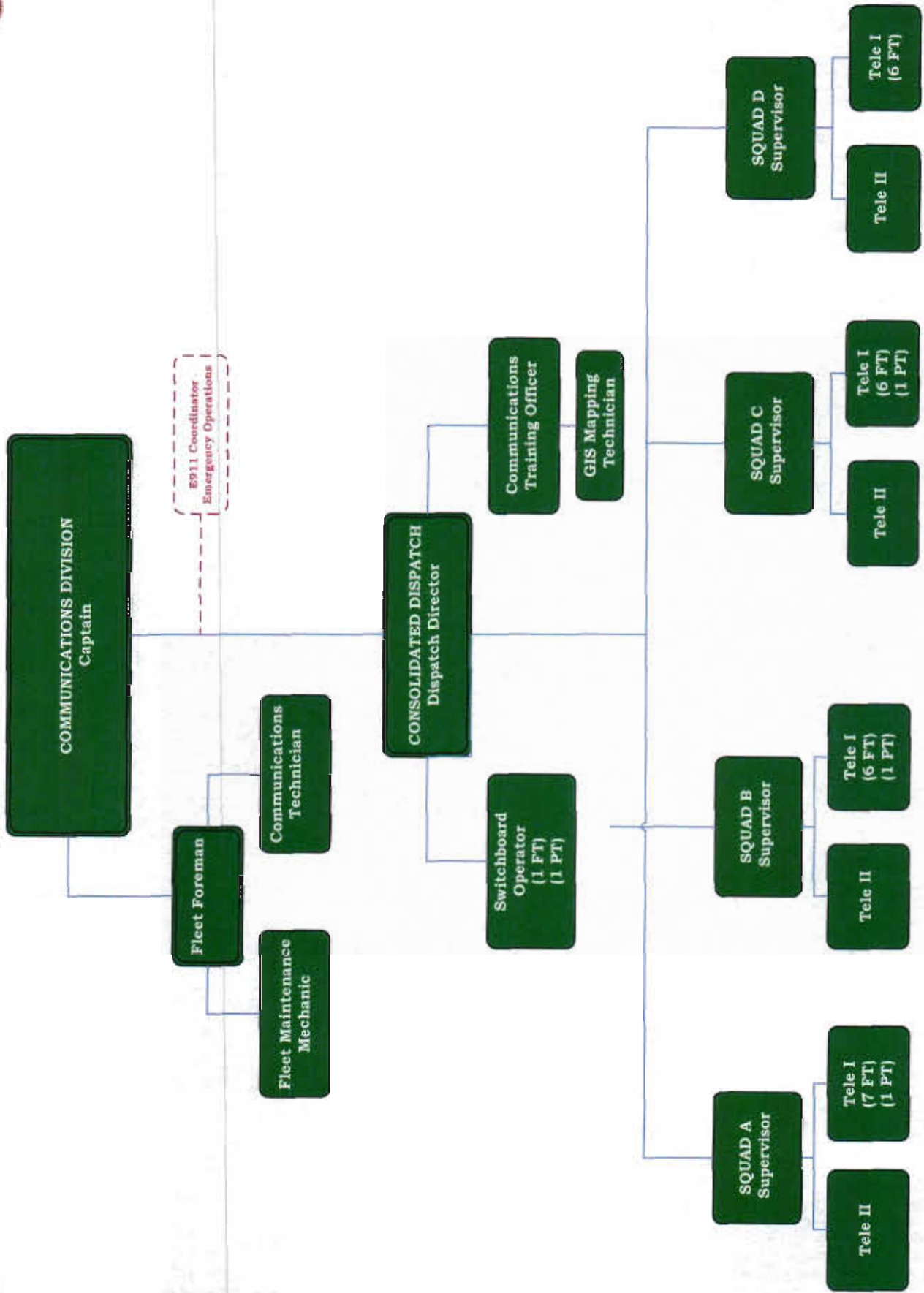
**WARRANTS
Supervisor**

Warrants
Specialist

SO FRONT DESK
Deputy Sheriff

FULL-TIME POSITIONS: 34
PART-TIME POSITIONS: 0

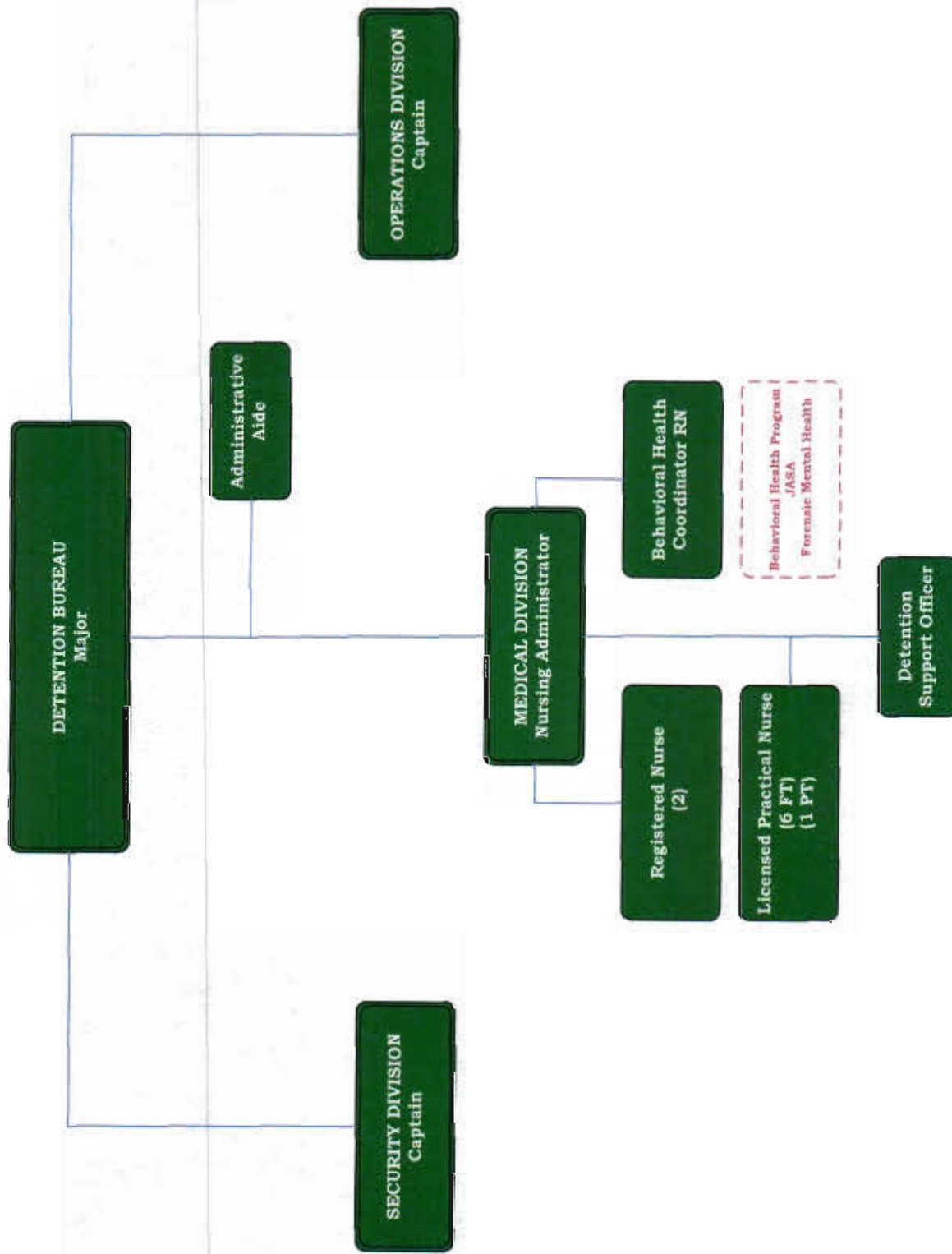
OPS NOT INCLUDED IN FTE'S



Represents additional functions under position.

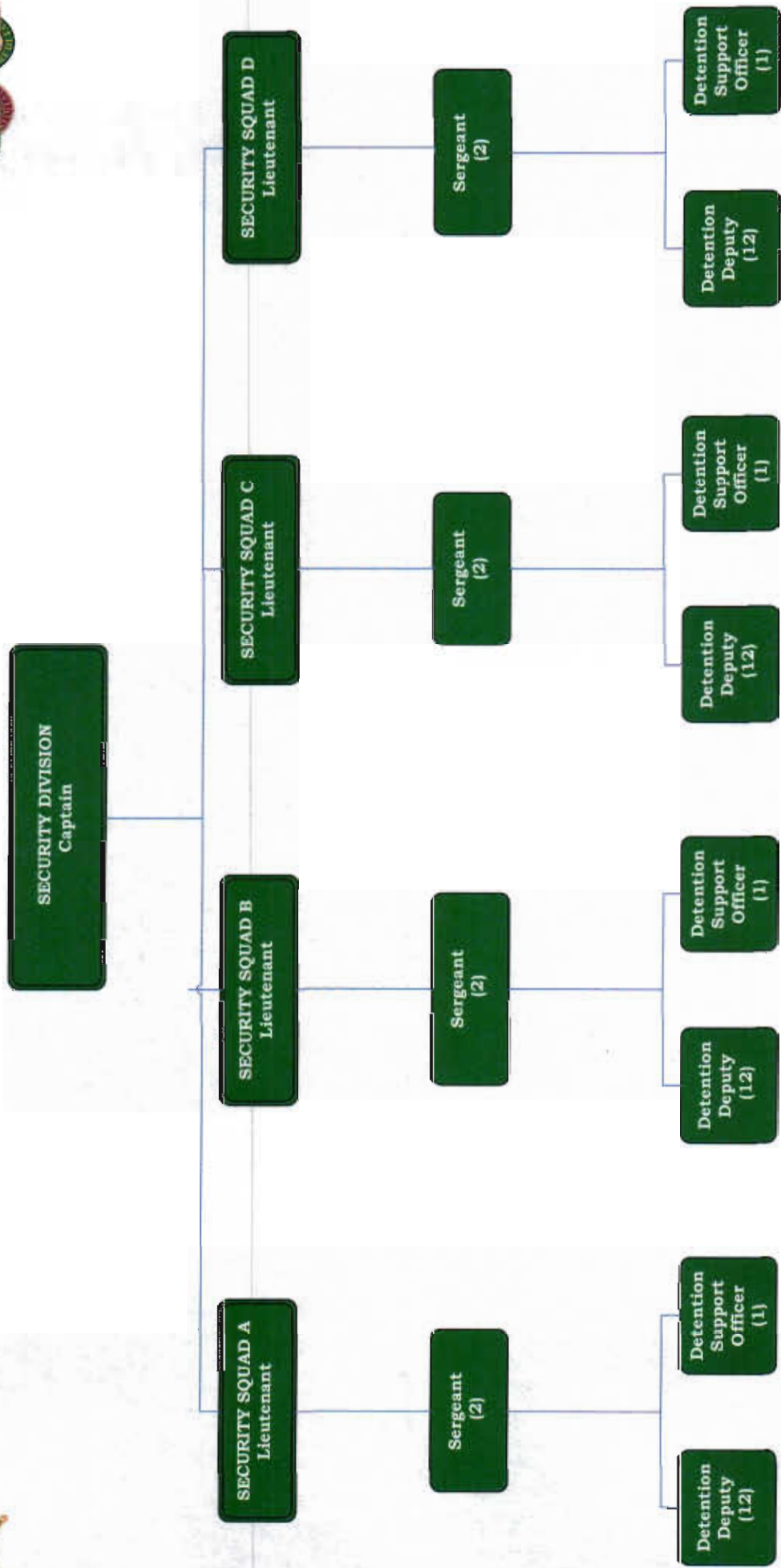
FULL-TIME POSITIONS:	41
PART-TIME POSITIONS:	4



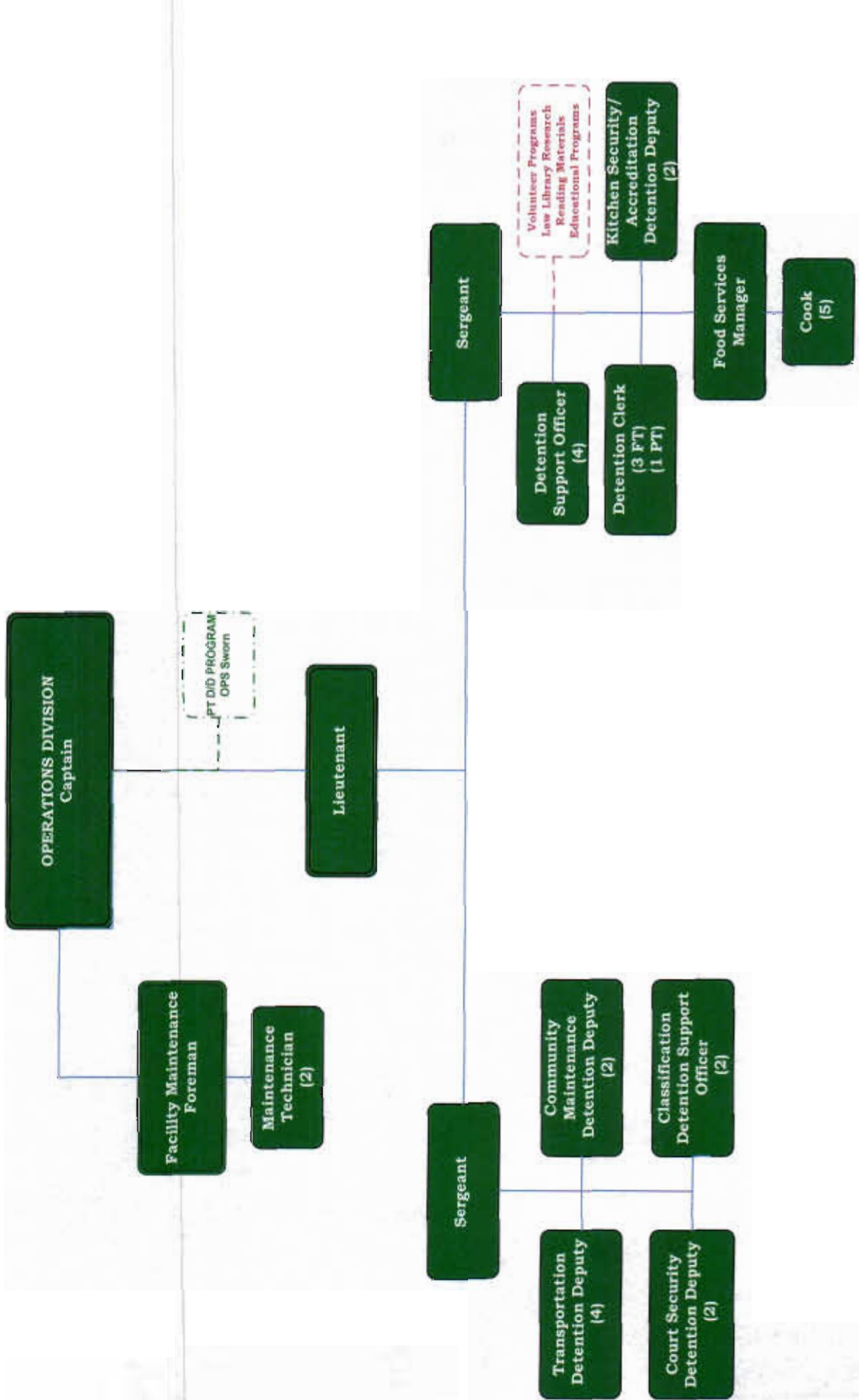


FULL-TIME POSITIONS: 13
PART-TIME POSITIONS: 1

Represents additional functions under position



FULL-TIME POSITIONS: 65
 PART-TIME POSITIONS: 0



(Represents additional functions under position)

FULL-TIME POSITIONS:	32
PART-TIME POSITIONS:	1